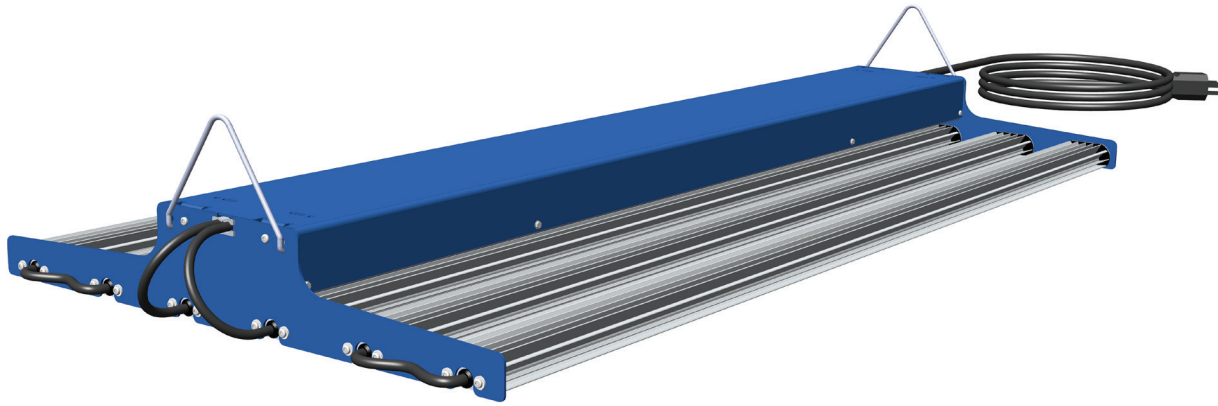


# NEOSOL NS



## Features & Specifications

### APPLICATIONS

Suitable for a wide range of hobby and home enthusiast applications including cultivation of vegetative or flowering plants in grow tents or compact growing areas. May be used in vertically stacked orientation of two or more layers of grow trays and NeoSol Fixtures.

### GENERAL DESCRIPTION

LED plant growth fixture designed to produce high Photosynthetically Active Radiation (PAR) values with unsurpassed beam uniformity and excellent light utilization. Available with Illumitex Surexi (static spectrum) LEDs. Slim fixture design maximizes volumetric area for plant growth and minimizes fixture weight.

### ELECTRICAL

Modular design allows for universal power supply of 120V-277V Class 1 integral drivers. 530mA drive current. 15' cable.

### TESTING & COMPLIANCE

- IP66 classified per IEC529
- ETL / cETL listing

### FINISH

Clear anodized finish on bars. Blue powder-coat on housing.

### MECHANICAL

36" bar length. IP66 rated drivers and LED bar construction. 3-prong AC plug.

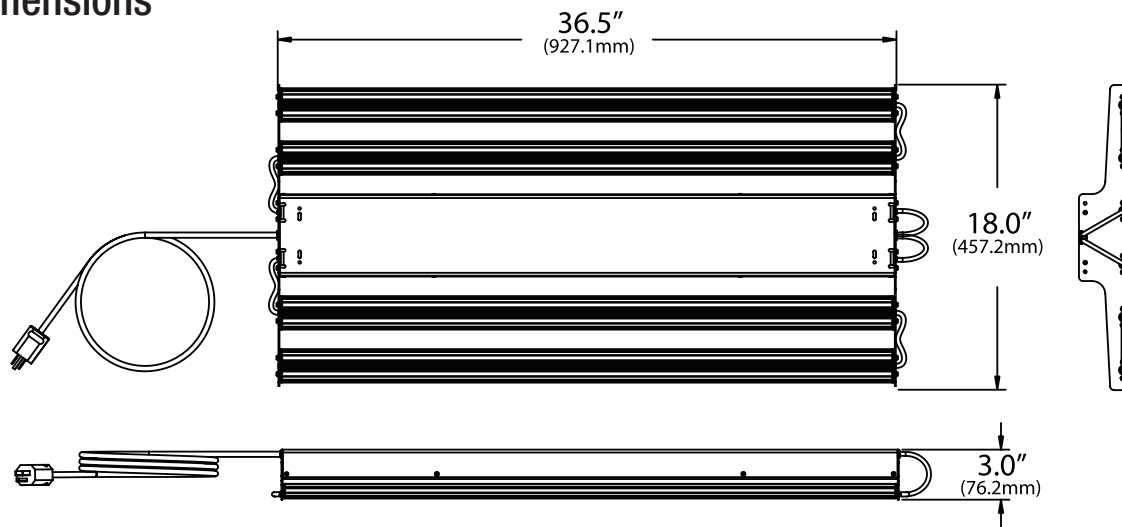
## Part No. Ordering Guide

Enter the 1-2 character code for each boxed category in the corresponding field.

<b>N</b>	<b>S</b>	<b>6</b>	<b>3</b>	<b>6</b>	<b>9</b>	<b>F</b>	<b>3</b>	<b>6</b>	<b>3</b>	<b>0</b>	<b>U</b>
<b>SERIES</b>			<b>BAR LENGTH</b>			<b>LED SPECTRA</b>			<b>POWER SUPPLY</b>		
✓ NS			✓ 36" Bar			✓ F3 = F3 50°			✓ 30 = 300W 6 Bar		
	<b>NO. OF BARS</b>			<b>NO. OF LEDs PER BAR</b>			<b>DIGITAL DISTRIBUTION</b>			<b>INPUT</b>	
	✓ 6 = 6 Bar			✓ 9 Surexi LEDs			✓ 6 = DD65			✓ U = 120V	

# NEOSOL NS

## Fixture Dimensions



## Light Output

Spectrum	F3
Beam Angle	50°
Digital Distribution	DD65
Radiometric Watts (W)	80
PPF Typical ( $\mu\text{mol/s}$ )	390
PPF/Wel Typical ( $\mu\text{mol/J}$ )*	1.2
Electrical Watts	314

Assumptions on power: Use 55C ETO data; assume 530mA drive current  
\* Including external power supply with 88% efficiency

## Spectra (F3)

