

CoolBar™

High Intensity, Water-Cooled Lighting for Modern Farmers

www.coolbar.co | 307-288-1188

TECHNICAL OVERVIEW



Base Package

- 48 - CoolBars
- 8 - Power Supplies
- 2 - LightRacks
- 1 - Chiller
- Irrigation
- Wiring to end of rack

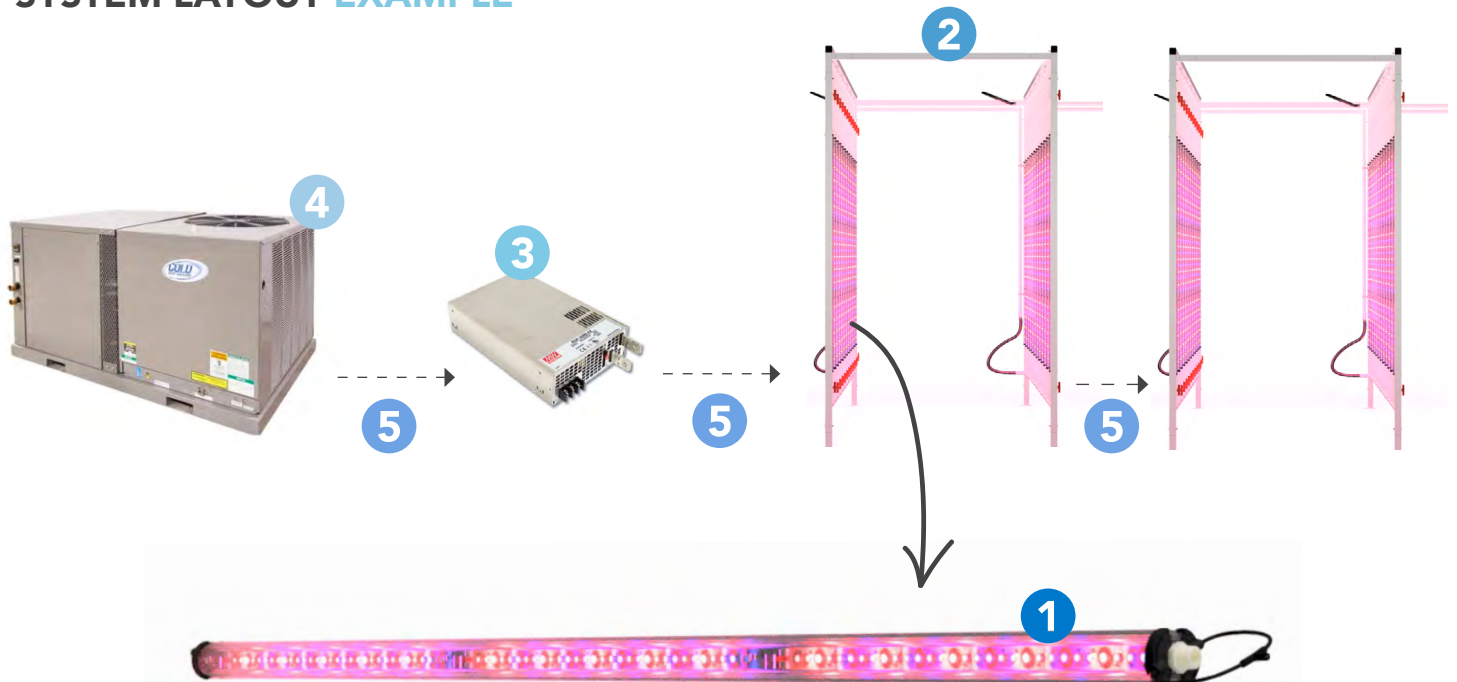


Add-ons

- Rack Junction Box
| Connection point for power supply cable, & 6 LED cables. Easy installment, clean look.

Questions about the base package or add-ons?
Call (307) 288-1188 for more details or specific questions.

SYSTEM LAYOUT EXAMPLE



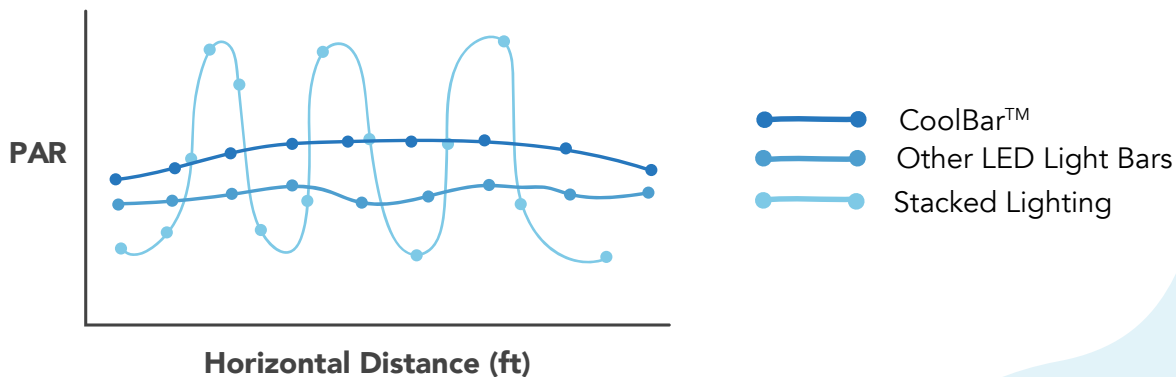
DETAILED PRODUCT SPECS

CoolBar (1 - diagram on pg 2)

Specification	CoolBar	MeanWell RSP 3000-48 (powers 6 CoolBars)
Power Consumption	358W (typ) 400W (max)	2100 W (typ) 3000 W (max)
Input Voltage	48 VDC 54 VDC	180~260VAC
Current	7.6A/45VDC 6.52A/53.3VDC	20A/180VAC 16A
Inrush Current	(-)	60A/230VAC
Heat Generation	670 BTU/hr (typ)	609 BTU/hr (typ) 1024 BTU/hr (max)
Weight	8.4 lbs	8.8 lbs
Dimensions (LxWxH)	2.625" x 2.125" x 68.625"	1.9" x 7" x 2.5"
Mounting	T-Slot Framing Profile	M-4 Mounting Screw
Plumbing Connection	1/2" FNPT	(-)
Min. Flow Rate/Light (80% Water, 20% Propylene Glycol)	.35 gpm	(-)
Certifications	FCC, UL & cUL (in process)	UL, TUV

- Aluminum extruded body, anodized, and coated with epoxy
- Removable splash-proof HIPS caps, and poly carbonate, clear shroud
- 6 removable power supply boards, and LED boards
- High value PAR, with wide coverage area
- Double-sided
- Water-cooled
- Deep red, warm white, and royal blue LEDs (3:1:1 ratio)
- 3 year warranty
- Safety - UL and cUL certification pending

CoolBar Horizontal Average



LightRack (2 - diagram on pg 2)

- Modular
- Dimensions: 5' 6.25" x 18' 5" x 9' 8" (W x L x H)

Power Supply (3 - diagram on pg 2)

- Powers 6 CoolBars
- High voltage or 3 phase input
- On/Off Remote control
- Remote Sense
- 91.5% efficiency

Learn more about the CoolBar power supply [here](#).

Cold Shot Chiller (4 - diagram on pg 2)

- 24/7 customer support, including certified service technicians nation wide
- Off the shelf parts for quick repairs, or overnight shipments
- Portable or stationary options
- Sizing ~2 tons per rack

Learn more about Cold Shot Chillers [here](#).

Chiller Add-ons

- Low ambient kit, good to -20 degrees F
- Condenser coil coating to protect from salt air
- 55 gallons of USDA Food Grade propylene glycol, delivered
- Remote Status Box
- Remote Control Panel
- Split condenser
- Pump upgrade (we'll help determine when this is necessary)
- Chiller start-up and 1 year labor warranty

Irrigation (5 - diagram on pg 2)

- PVC assemblies
- Flow control through each light
- Easily attaches to rack, and lights
- Bars removable, mid-operation
- Modular Design
- Runs to ends of racks

*Note: The tubing/wiring between the power supply, chiller, and the LightRacks is **not** included in the base package.*



High Intensity, Water-cooled Lighting for Modern Farmers

www.coolbar.co | 307-288-1188